

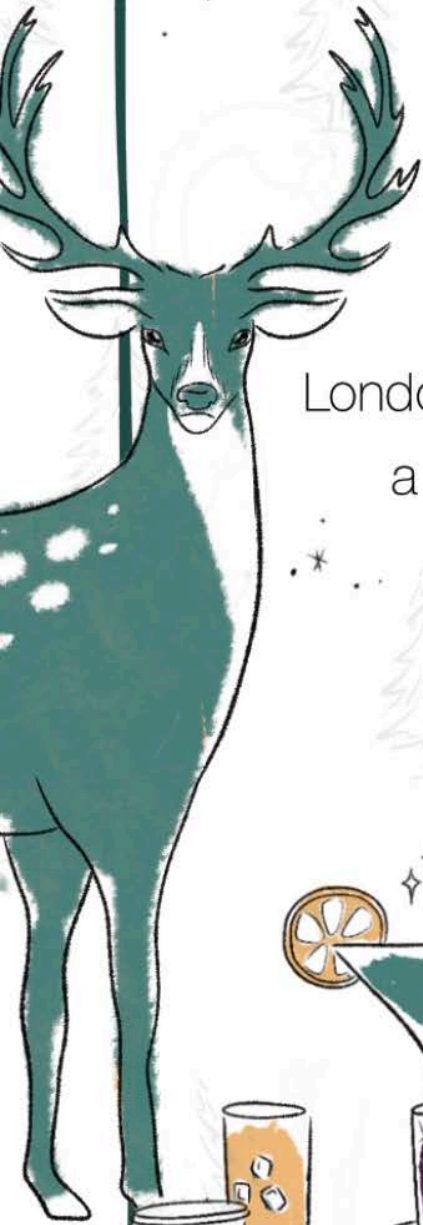
# Winterland



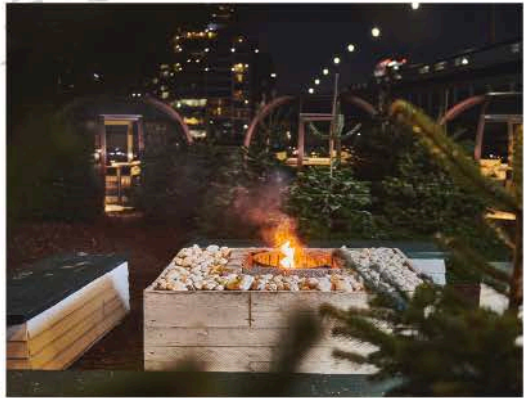


# WELCOME TO *Neverland*

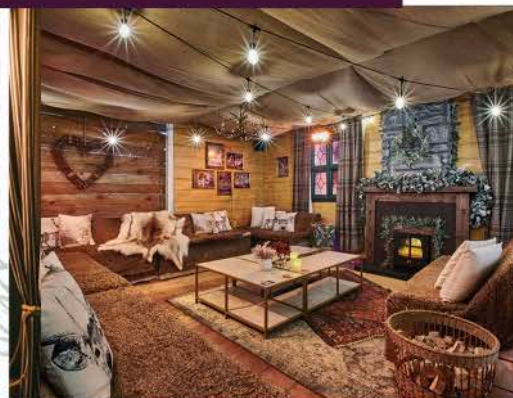
Swapping sand for snowflakes, Winterland lights up West London with it's alpine magic. It's the ultimate destination for those seeking a unique place to savour delicious food, sip delightful drinks, enjoy thrilling games, dance the night away and most importantly, escape the hustle and bustle of London life.







# WINTERLAND





# AT A GLANCE



Two Bars



Designated  
Smoking Area



Cloakroom



Disabled  
Access



Wifi



Late License  
Available



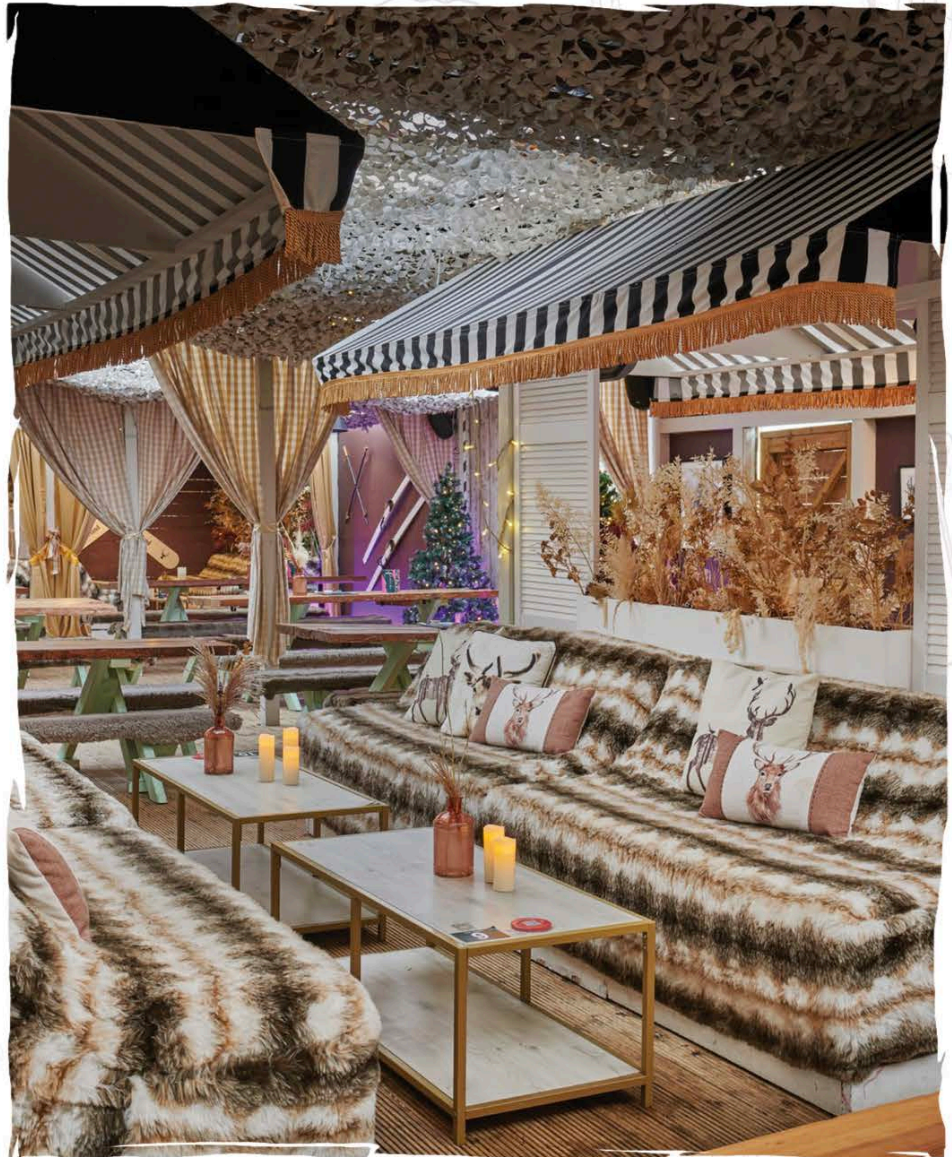
Seasonly  
Themed



Fully  
Catered

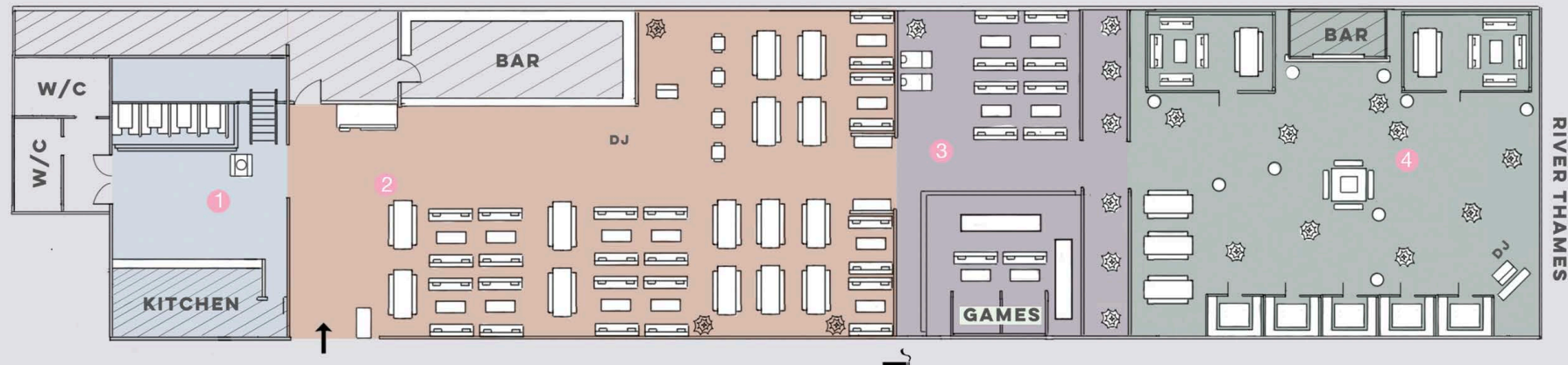


Suitable For  
All Weather



# FLOORPLAN

## WINTERLAND



### 1. BOTANICAL KITCHEN

Full Capacity 100  
Seated Capacity 20

Ski Cabins - for 4  
Ski Bubble - for 2-4  
Kitchen

### 2. THE LODGE

Full Capacity 350  
Seated Capacity 200

Tables - for 8 / 2  
Sofas - for 8-10  
Photobooth

### 3. THE TEEPEE

Full Capacity 135  
Seated Capacity 45

Sofas - for 8  
Darts, shuffleboard & Beer pong  
Arcade basketball

### 4. THE FOREST

Full Capacity 150  
Seated Capacity 100

Tables - for 8  
Chalets - for 20-30  
Forest Cabins - for 10  
Fire pit & Benches



# THE FOREST

FULL CAPACITY 140  
SEATED CAPACITY 80

## *Forest Cabins*

Enjoy both the privacy & the views of our outdoors winterland, with up to 10 people.



## *Winter Chalets*

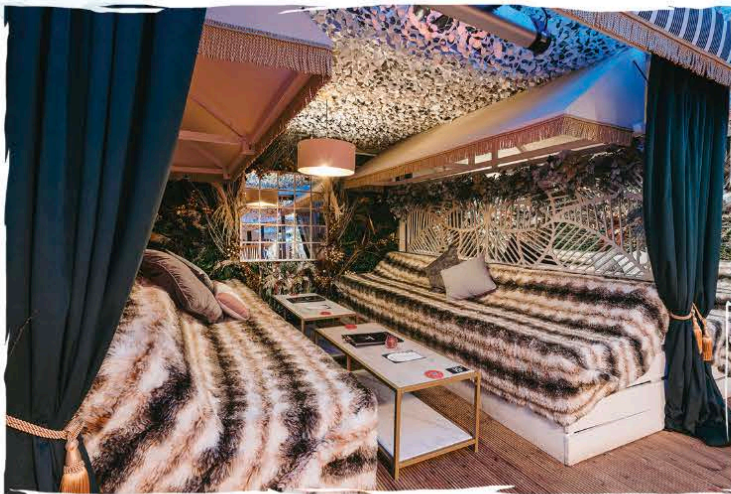
For those seeking refuge from the cold, or a more private space, we have 2 large comfortable & sheltered chalets for 20 - 30 people.

# THE LODGE

FULL CAPACITY 350  
SEATED CAPACITY 200

## *Sofas*

The lodge sofas are pockets of comfort:  
warm, cosy & safe from the cold -  
for 8 -10 people.



## *Tables*

Join us in our alpine themed lodge, for all  
the food & drink Winterland has  
to offer. Perfect for networking,  
tables seat up to 8 people.



# THE TEEPEE — BOTANICAL KITCHEN

FULL CAPACITY 80  
SEATED CAPACITY 40

FULL CAPACITY 50  
SEATED CAPACITY 28

## *Sofas*

Lounge back and relax in our cozy fur-lined sofas while enjoying a front row seat to the games, for 8 -10 people.

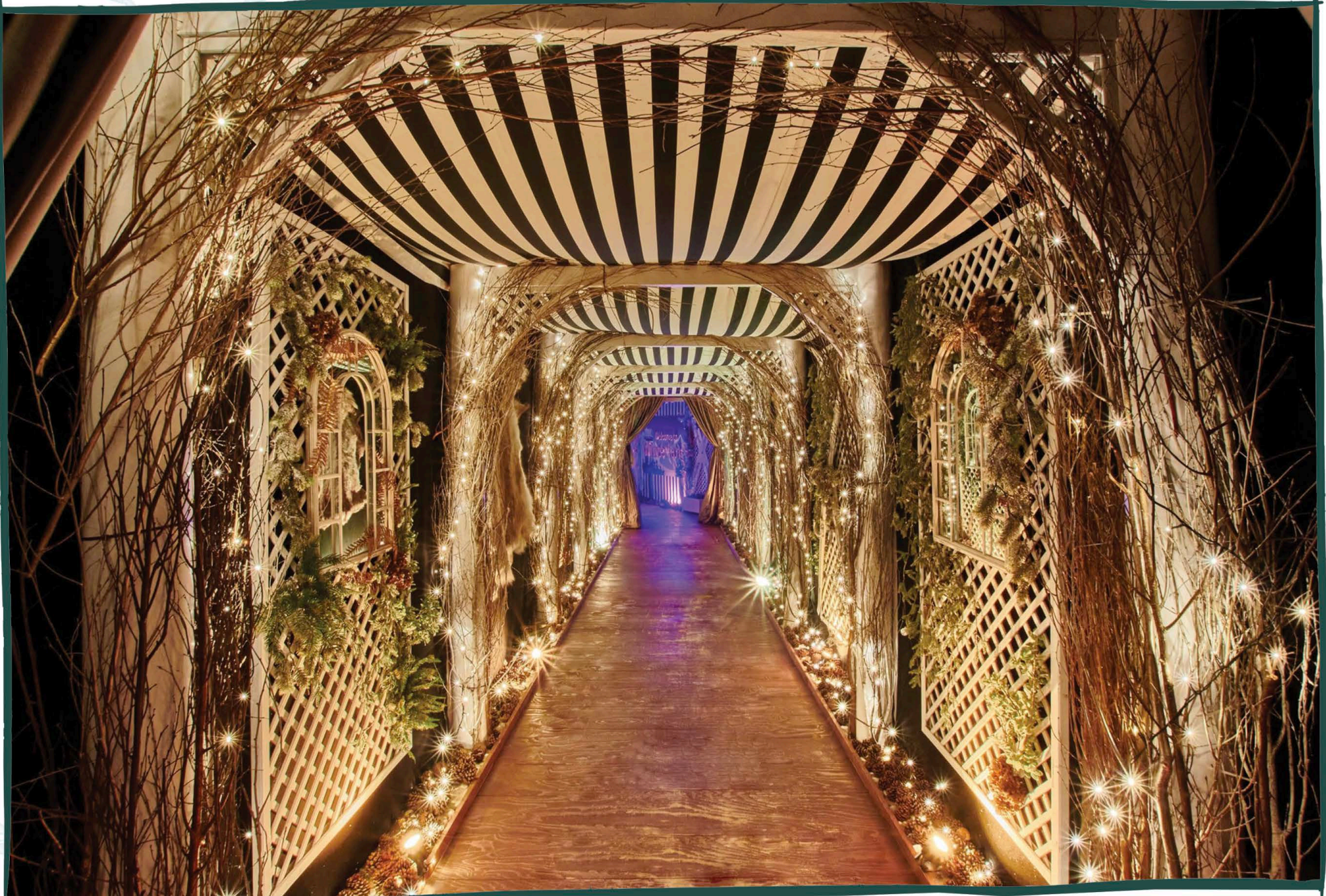


## *Ski Bubble*

Escape from the slopes - courtesy of our private ski bubble, for up to 4 people.







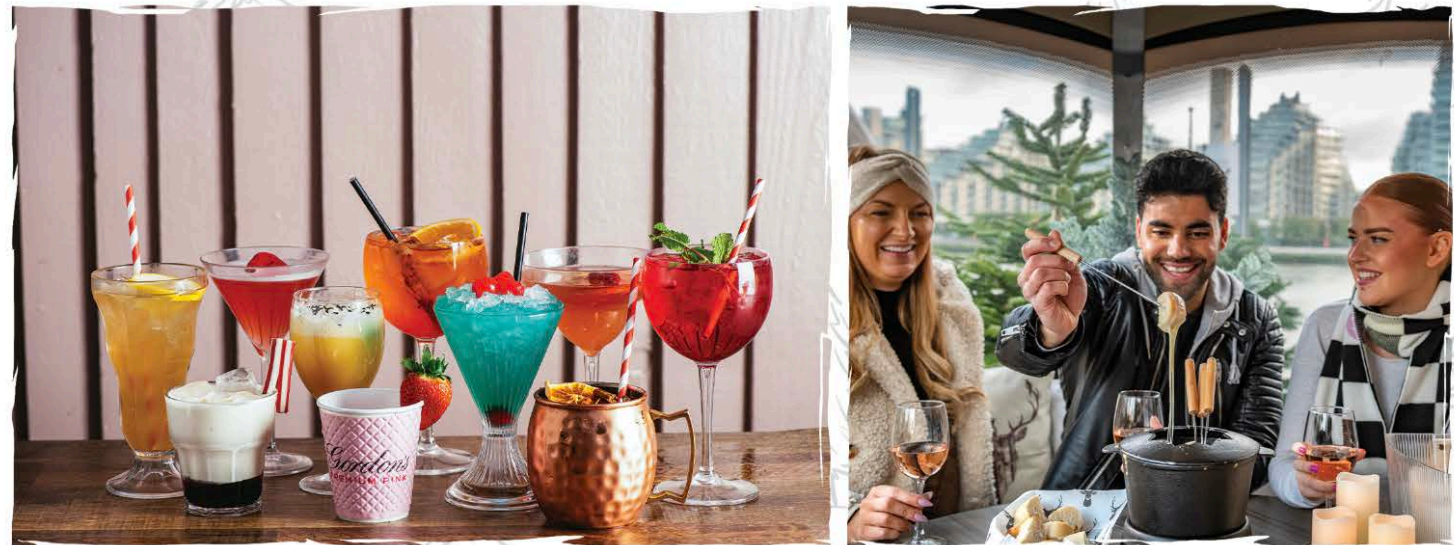


# FOOD & DRINK

We offer various warm, winter dishes and sharing platters including a range of gooey fondues and delicious charcuterie platters - we even serve festive inspired pizzas.

Fancy some Bailey's hot chocolate, mulled wine or a hot gin?  
Or had something else in mind?

Just let us know, our chefs love to mix it up!





# ENTERTAINMENT & GAMES

For those more playful explorers, get those battle fingers ready for our interactive darts, shuffleboard, beer pong and arcade basketball, or groove on the dance floor to London's best DJs.

Additionally we can provide a range of entertainment from our trusted suppliers, such as drag queens, glitter artists, skaters, roaming bands, magicians and much, much more.





# EXCLUSIVE EVENTS

We offer exclusive hire all year round, catering for up to 500 full capacity, 250 seated, 150 theatre style, or 100 classroom/cabaret style\*.

Our in-house kitchen can cater for all themes & dietary requirements, and our bar staff can create bespoke cocktails & drink menus in-line with your client needs.

*It's takeover & giveaway*



*\*capacities based on indoor space*



# SHARED HIRE

Are you looking for a work Christmas party in London?

We offer bespoke packages for groups from 10-200 people. These include reserved areas, food, drinks, games, and DJ entertainment. Shared Christmas parties are very popular at Winterland, so don't miss out and contact us for help booking the perfect night.

*Christmas party nights!*



*Aloha Spritz area hire!*





# TESTIMONIALS

*Don't take our word for it!*

**accenture**

“We just wanted to say a huge thank you to you and the team for last night! The event yesterday went very well, and we got feedback that it was one of the best Christmas parties we have had, so thank you very much for being so accommodating and easy to work with.”

**Mondelēz**

“The Christmas party went really well, you really looked after us from arrival to departure. It was very much appreciated. You looked after our UK MD with vegetarian food as well and all looked and tasted great. Everyone I spoke to had a great night and definitely thought it was a great venue!

Thank you so much for all your help, you are amazing and we are so grateful for all your flexibility. It has been a great pleasure working with you and your team, you could set an example for many other venues!



“Thanks from the IKEA team for a really special christmas party - big thanks to the whole team that worked, food was great, music was great and everyone was so welcoming, friendly and helpful! Please pass on my sincere thanks to all.”



# TESTIMONIALS

Tails  
.com

“Thank you so much for an amazing night! Thank you to you and your amazing management team and DJ and photographer. Everyone on site was so wonderful to us and I’m getting nothing but praise for the venue, food, music, etc. Please please please pass on my gratitude to everyone involved on the night - what a stellar group of people - you took such great care of us!”

ebay

“I just wanted to extend my thanks to both you and the team for your work on our party. It was a huge success and people were raving about the venue all day. You really made my life organising so much easier because your team looked after everything - thank you so much!”

THE BERKELEY

LONDON

“Thank you so much for your help planning for our event and to the entire team on the night who looked after us so well. Everything went great and the food was enjoyed by all.”





+  
*Gardoni's*

Winterland





# HAPPY HEADLINES

*Our favourite quotes fresh off the press!*

## STYLIST

"Fancy escaping to an Alpine paradise this winter? Now you can with Neverland as it transforms into one of the most Christmassy bars in London, Winterland. Expect hot mulled wine around the fire pit, pretty igloos and fairy lights."

## LONDONIST

"A white Christmas is guaranteed at Winterland Fulham - a veritable village of festivities, including an Alpine Lodge, fur-lined sofas, and the general demeanour of the set of a Wham! music video, minus the big hair. There's even an outdoor forest with its own 'Southern Lights.'"

## CULTURE *Whisper*

"Neverland in Fulham has once again swapped its sandy beach and sunny palms for a snowy alpine village. Duck into the Forest Bar for a mulled wine, hot gin or boozy hot chocolate, and if you find you have a bit of fire in you yet, stick around for DJ sets."



# GET IN TOUCH

*Like what you see?*

Book a visit with us below!

Find us at:

Neverland London, Wandsworth Bridge Road, London SW6 2TY

For shared hire

email : [hello@neverlandlondon.com](mailto:hello@neverlandlondon.com)

phone : 0203 034 0293

For corporate and private bookings

email : [corporate@neverlandlondon.com](mailto:corporate@neverlandlondon.com)

phone : 0203 034 0293

We look forward to welcoming you!





PARSONS GREEN

IMPERIAL WHARF

CHELSEA HARBOUR

BATTERSEA PARK

IMPERIAL PARK

HURLINGHAM PARK

SOUTH PARK

Neverland London

COTTON ROW

YORK GARDENS

CLAPHAM JUNCTION

RIVER THAMES

WANDSWORTH TOWN

A308

A247

A325

WANDSWORTH BRIDGE





[www.neverlandlondon.com](http://www.neverlandlondon.com)